



VOCESTER
USA

Sanitary Pipe Fittings



High Quality Sanitary Tubes and Fittings

Vocester produces various pipe fittings that comply with standards such as DIN, 3A, SMS, ISO, IDF, BS, RJT, DS, etc. Sanitary stainless steel pipe fittings include 45° / 90° / 180° elbows, tees, crosses and reducers. There are four common connection ways for various series of pipe fittings, including weld, tri-clamp, thread and flange, to connect to the pipeline system.

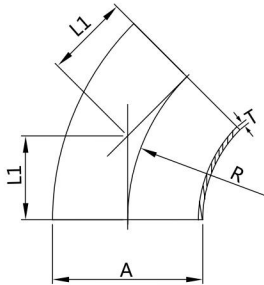


Vocester is committed to manufacturing pipe fittings with corrosion resistance, durability, reliable welding and the highest strength to meet customer requirements. There are strict tolerance controls in each manufacturing process, and there are multiple surface finish ways for pipe fittings with uniform thickness.

Vocester is well aware that products such as valves and fittings are very important in the fields of pharmaceuticals, beer, food, dairy, beverages, cosmetics and chemicals, so the products must meet extremely high precision and roughness requirements. To ensure the interchangeability of Vocester pipe fittings and the high precision of the product, each part is processed by CNC machines. Vocester various series of products enjoy a good reputation in the sanitary fluid equipment industry.



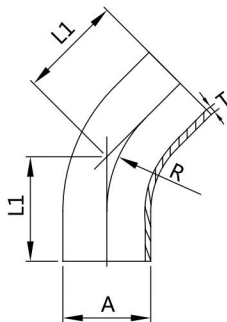
DIN



Dimensions - 45° Welded Elbow

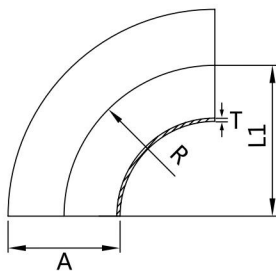
Size (DN)	A	R	L1	T
10	12/13	26	10.7	1.5
15	18/19	35	14.5	1.5
20	22/23	40	16.5	1.5
25	28/29	50	20.7	1.5
32	34/35	55	22.8	1.5
40	40/41	60	24.8	1.5
50	52/53	70	29	1.5
65	70	80	33.2	2
80	85	90	37.3	2
100	104	100	41.5	2
125	129	187.5	77.5	2
150	154	225	93.2	2
200	204	300	124.3	2
250	254	325	155.3	2
300	306	450	186.4	3

Dimensions - 45° Long Welded Elbow



Size (DN)	A	R	L1	T
10	12/13	26	35.8	1.5
15	18/19	35	39.5	1.5
20	22/23	40	41.6	1.5
25	28/29	50	60.7	1.5
32	34/35	55	62.8	1.5
40	40/41	60	64.9	1.5
50	52/53	70	69	1.5
65	70	80	73	2
80	85	90	92.3	2
100	104	100	96.4	2
125	129	187.5	135.2	2
150	154	225	156.7	2

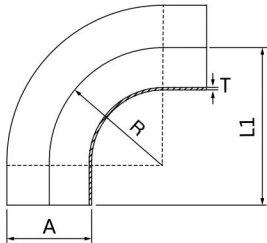
Dimensions - 90° Welded Elbow



Size (DN)	A	R	L1	T
10	12/13	26	26	1.5
15	18/19	35	35	1.5
20	22/23	40	40	1.5
25	28/29	50	50	1.5
32	34/35	55	55	1.5
40	40/41	60	60	1.5
50	52/53	70	70	1.5
65	70	80	80	2
80	85	90	90	2
100	104	100	100	2
125	129	187	187	2
150	154	225	225	2
200	204	300	300	2
250	254	375	254	2
300	306	450	306	3



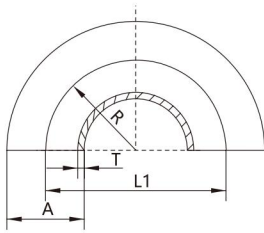
DIN



Dimensions - 90° Long Welded Elbow

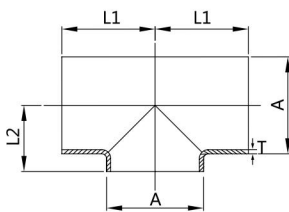
Size (DN)	A	R	L1	T
10	12/13	26	38/51	1.5
15	18/19	35	47/60	1.5
20	22/23	40	52/65	1.5
25	28/29	50	70/90	1.5
32	34/35	55	78/95	1.5
40	40/41	60	85/100	1.5
50	52/53	70	97/110	1.5
65	70	80	110/120	2
80	85	90	118/145	2
100	104	100	140/155	2
125	129	187	227	2
150	154	225	265	2

Dimensions - 180° Welded Elbow



Size (DN)	A	R	L1	T
10	12/13	26	52	1.5
15	18/19	35	70	1.5
20	22/23	40	80	1.5
25	28/29	50	100	1.5
32	34/35	55	110	1.5
40	40/41	60	120	1.5
50	52/53	70	140	1.5
65	70	80	160	2
80	85	90	180	2
100	104	100	200	2
125	129	187.5	375	2
150	154	225	450	2
200	204	300	600	2
250	254	375	750	2
300	306	450	900	3

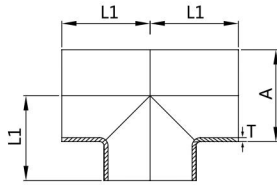
Dimensions - Short Welded Tee



Size (DN)	A	R	L1	T
10	12/13	26	7.5	1.5
15	18/19	35	10.5	1.5
20	22/23	40	12.5	1.5
25	28/29	50	16	1.5
32	34/35	55	19.5	1.5
40	40/41	60	22.5	1.5
50	52/53	70	30	1.5
65	70	80	39.5	2
80	85	90	47.5	2
100	104	100	58	2
100	101.6	150	56	2
125	129	187	70.5	2
150	154	225	83	2
200	204	300	115	2
250	254	216	140	2
300	306	254	165	3



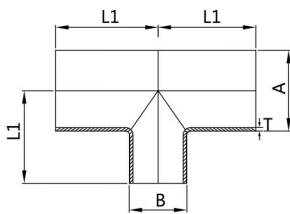
DIN



Dimensions - Welded Tee

Size (DN)	A	L1	T
10	12/13	26	1.5
15	18/19	35	1.5
20	22/23	40	1.5
25	28/29	50	1.5
32	34/35	55	1.5
40	40/41	60	1.5
50	52/53	70	1.5
65	70	80	2
80	85	90	2
100	104	100	2
125	129	187	2
150	154	225	2
200	204	300	2
250	254	216	2
300	306	254	3

Dimensions - Long Welded Reducing Tee

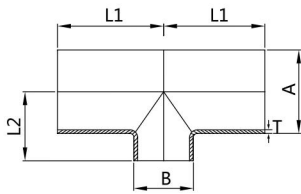


Size (DN)	AxB	L1	T
25-20	28x22	50	1.5
32-25	34x28	55	1.5
40-25	40x28	60	1.5
40-32	40x34	60	1.5
50-25	52x28	70	2
50-32	52x34	70	2
50-40	52x40	70	2
65-25	70x28	80	2
65-32	70x34	80	2
65-40	70x40	80	2
65-50	70x52	80	2
80-25	85x28	90	2
80-32	85x34	90	2
80-40	85x40	90	2
80-50	85x52	90	2
80-65	85x70	90	2
100-25	104x28	100	2
100-32	104x34	100	2
100-40	104x40	100	2
100-50	104x52	100	2
100-65	104x70	100	2
100-80	104x85	100	2
125-25	129x28	187.5	2
125-32	129x104	187.5	2
125-40	129x104	187.5	2
125-50	129x104	187.5	2
125-65	129x104	187.5	2
125-80	129x104	187.5	2
125-100	129x104	187.5	2
150-32	154x34	225	2
150-40	154x40	225	2
150-50	154x52	225	2
150-65	154x70	225	2
150-80	154x85	225	2
150-100	154x104	225	2
150-125	154x129	225	2



DIN

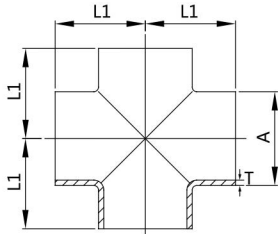
Dimensions - Short Welded Reducing Tee



Size (DN)	AxB	L1	L2	T
25-20	28x22	50	17	1.5
32-25	34x28	55	19.5	1.5
40-25	40x28	60	22.5	1.5
40-32	40x34	60	22.5	1.5
50-25	52x28	70	29.5	2
50-32	52x34	70	29.5	2
50-40	52x40	70	29.5	2
65-25	70x28	80	39	2
65-32	70x34	80	39	2
65-40	70x40	80	39	2
65-50	70x52	80	46.5	2
80-25	85x28	90	46.5	2
80-32	85x34	90	46.5	2
80-40	85x40	90	46.5	2
80-50	85x52	90	46.5	2
80-65	85x70	90	46.5	2
100-25	104x28	100	56	2
100-32	104x34	100	56	2
100-40	104x40	100	56	2
100-50	104x52	100	56	2
100-65	104x70	100	56	2
100-80	104x85	100	56	2
125-25	129x28	187.5	68.5	2
125-32	129x104	187.5	68.5	2
125-40	129x104	187.5	68.5	2
125-50	129x104	187.5	68.5	2
125-65	129x104	187.5	68.5	2
125-80	129x104	187.5	68.5	2
125-100	129x104	187.5	68.5	2
150-32	154x34	225	81	2
150-40	154x40	225	81	2
150-50	154x52	225	81	2
150-65	154x70	225	81	2
150-80	154x85	225	81	2
150-100	154x104	225	81	2
150-125	154x129	225	81	2



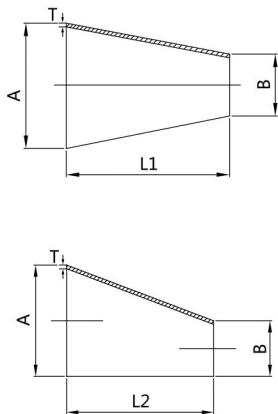
DIN



Dimensions - Welded Cross

Size (DN)	A	L1	T
10	12/13	26	1.5
15	18/19	35	1.5
20	22/23	40	1.5
25	28/29	50	1.5
32	34/35	55	1.5
40	40/41	60	1.5
50	52/53	70	1.5
65	70	80	2
80	85	90	2
100	104	100	2
125	129	187	2
150	154	225	2
200	204	300	2
250	254	216	2
300	306	254	3

Dimensions - Welded Reducer

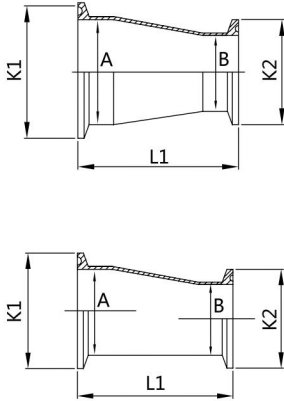


Size (DN)	A	B	L1	L2	T
15/10	18/19	12/13	11		1.5x1.5
20/10	22/23	12/13	18		1.5x1.5
20/15	22/23	18/19	7		1.5x1.5
25/15	28/29	18/19	18		1.5x1.5
25/20	28/29	22/23	11		1.5x1.5
32/20	34/35	22/23	22		1.5x1.5
32/25	34/35	28/29	11	16.5	1.5x1.5
40/20	40/41	22/23	33		1.5x1.5
40/25	40/41	28/29	22	33	1.5x1.5
40/32	40/41	34/35	22	16.5	1.5x1.5
50/25	52/53	28/29	44	66	1.5x1.5
50/32	52/53	34/35	33	49.5	1.5x1.5
50/40	52/53	40/41	22	33	1.5x1.5
65/25	70	28/29	73		2x1.5
65/32	70	34/35	62		2x1.5
65/40	70	40/41	51	77	2x1.5
65/50	70	52/53	29	44	2x1.5
80/40	85	40/41	78		2x1.5
80/50	85	52/53	56	85	2x1.5
80/65	85	70	27	41.2	2x2
100/50	104	52/53	90	137.5	2x1.5
100/65	104	70	61	93.5	2x2
100/80	104	85	34	52.5	2x2
125/80	129	85	80		2x2
125/100	129	104	45		2x2
150/100	129	104	90		2x2
150/125	154	129	45		2x2
200/150	204	154	90		2x2



DIN

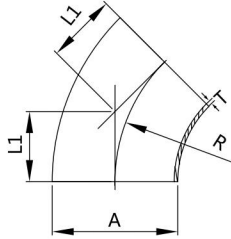
Dimensions - Clamped Reducer



Size (DN)	A	B	K1xK2	L1
20/15	22/23	18/19	34x34	86
25/20	28/29	22/23	50.5x34	86
32/20	34/35	22/23	50.5x34	106
32/25	34/35	28/29	50.5x50.5	106
40/20	40/41	22/23	50.5x34	128
40/25	40/41	28/29	50.5x50.5	128
40/32	40/41	34/35	50.5x50.5	128
50/25	52/53	28/29	64x50.5	141
50/32	52/53	34/35	64x50.5	141
50/40	52/53	40/41	64x50.5	141
65/25	70	28/29	91x50.5	151
65/32	70	34/35	91x50.5	151
65/40	70	40/41	91x50.5	146
65/50	70	52/53	91x64	146
80/40	85	40/41	106x50.5	166
80/50	85	52/53	106x64	151
80/65	85	70	106x91	146
100/50	104	52/53	119x64	192
100/65	104	70	119x91	159
100/80	104	85	119x106	152



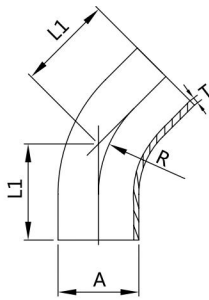
SMS



Dimensions - 45° Welded Elbow

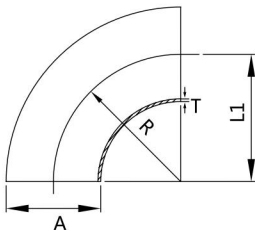
Size	A	R	L1	T
25	25.4	38.1	15.5	1.25/1.5
38	38.1	57.2	23.6	1.25/1.5
51	50.8	76.2	31.6	1.25/1.5
63	63.5	95.3	39.5	1.5/2
76	76.2	114.3	47.2	1.6/2
102	101.6	152.4	63	2
127	127	190.5	78.9	2
152.4	152.4	228.6	94.7	2
203.2	203.2	305	126.3	2

Dimensions - 45° Long Welded Elbow



Size	A	R	L1	T
25	25.4	38.7	42.5	1.25/1.5
38	38.1	57.2	56.8	1.25/1.5
51	50.8	76.2	68.6	1.25/1.5
63	63.5	95.2	78.4	1.65/2
76	76.2	114.3	85.2	1.6/2
102	101.6	152.4	103	2
127	127	190.5	142.4	2
152.4	152.4	228.6	158.2	2
203.2	203.2	305	202.5	2

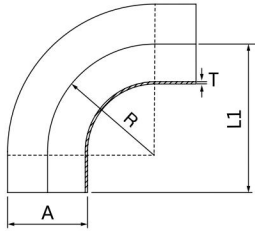
Dimensions - 90° Welded Elbow



Size	A	R	L1	T
25	25.4	38.1	38.1	1.25/1.5
32	31.8	47.7	47.7	1.25/1.5
38	38.1	57.2	57.1	1.25/1.5
51	50.8	76.2	76.2	1.25/1.5
63	63.5	95.2	95.2	1.5/2
76	76.2	114.3	114.3	1.65/2
102	101.6	152.4	152.4	2
104	104	152.4	152.4	2
127	127	190.5	190.5	2
152.4	152.4	228.6	228.6	2
203.2	203.2	305	305	2



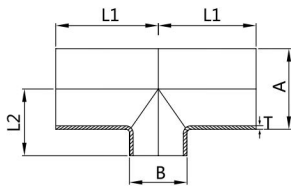
SMS



Dimensions - 90° Long Welded Elbow

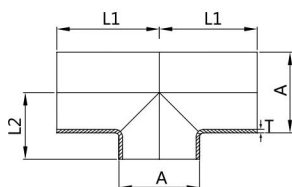
Size	A	R	L1	T
25	25.4	38.1	55	1.25/1.5
38	38.1	57.2	70	1.25/1.5
51	50.8	76.2	82	1.25/1.5
63	63.5	95.2	105	1.5/2
76	76.2	114.3	110	1.6/2
102	101.6	152.4	150	2
104	104	152.4	150	2
127	129	190.5	254	2
152.4	152.4	228.6	292	2
203.2	203.2	305	381	2

Dimensions - Reducing Welded Flat Tee



Size	AxB	L1	L2	T
38-25	38x25	70	21	1.5
51-25	51x25	82	29	1.5
51-38	51x38	82	29	1.5
63.5-25	63.5x25	105	36	1.5
63.5-38	63.5x38	105	36	1.5
63.5-51	63.5x51	105	36	1.5
76-25	76.1x25	110	44	1.6
76-38	76.1x38	110	44	1.6
76-51	76.1x51	110	44	1.6
76-63.5	76.1x63.5	110	44	1.6
101.6-25	101.6x25	150	58	2
101.6-38	101.6x38	150	58	2
101.6-51	101.6x51	150	58	2
101.6-63.5	101.6x63.5	150	58	2
101.6-76	101.6x76.1	150	58	2

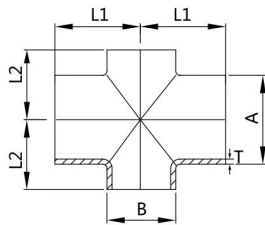
Dimensions - Equal Welded Flat Tee



Size	A	L1	L2	T
25	25	55	15	1.25/1.5
38	38	70	21	1.25/1.5
51	51	82	29	1.25
63.5	63.5	105	36	1.5
76	76.1	110	44	1.6
101.6	101.6	150	58	2
127	127	190.5	72	2
152.4	153.4	228.6	85	2
203.2	203.2	305	110	2



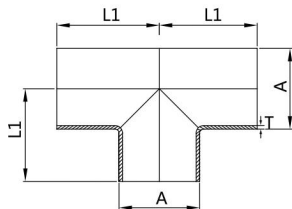
SMS



Dimensions - Reducing Welded Cross

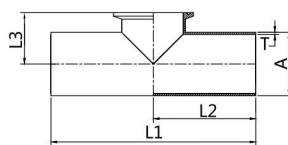
Size	AxB	L1	L2	T
38-25	38x25	70	21	1.25
51-25	51x25	82	29	1.25
51-38	51x38	82	29	1.25
63.5-25	63.5x25	105	36	1.5
63.5-38	63.5x38	105	36	1.5
63.5-51	63.5x51	105	36	1.5
76-25	76.1x25	110	44	1.6
76-38	76.1x38	110	44	1.6
76-51	76.1x51	110	44	1.6
76-63.5	76.1x63.5	110	44	1.6
101.6-25	101.6x25	150	58	2
101.6-38	101.6x38	150	58	2
101.6-51	101.6x51	150	58	2
101.6-63.5	101.6x63.5	150	58	2
101.6-76	101.6x76.1	150	58	2

Dimensions - Equal Tee



Size	A	L1	T
25	25	55	1.25
38	38	70	1.25
51	51	81	1.25
63.5	63.5	105	1.5
76	76.1	110	1.6
101.6	101.6	150	2
127	127	190.5	2
152.4	152.4	228.6	2
203.2	203.2	305.2	2

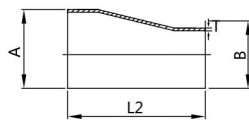
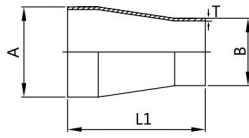
Dimensions - Equal Tee



Size	A	L1	L2	L3	T
25	25	110	55	26.7	1.2
38	38	140	70	33.7	1.2
51	51	164	82	41.2	1.2
63.5	63.5	210	105	48	1.6
76	76.1	220	110	54.2	1.6
101.6	101.6	300	150	70.5	2



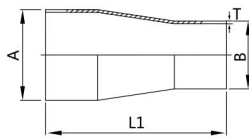
SMS



Dimensions - Welded Reducer

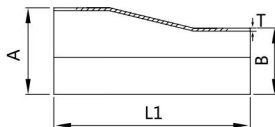
Size	AxB	L1	L2	T	
38.1-25.4	38.1x25.4	39	46	1.25x1.25	1.5x1.5
50.8-25.4	50.8x25.4	57	68	1.25x1.25	1.5x1.5
50.8-38.1	50.8x38.1	39	47	1.25x1.25	1.5x1.5
63.5-25.4	63.5x25.4	74	92	1.65x1.65	2x2
63.5-38.1	63.5x38.1	57	70	1.65x1.65	2x2
63.5-50.8	63.5x50.8	39	44	1.65x1.65	2x2
76.2-25.4	76.2x25.4	92	117	1.65x1.65	2x2
76.2-38.1	76.2x38.1	74	92	1.65x1.65	2x2
76.2-50.8	76.2x50.8	57	68	1.65x1.65	2x2
76.2-63.5	76.2x63.5	39	47	1.65x1.65	2x2
101.6-50.8	101.6x50.8	95	117	2x1.25	
101.6-63.5	101.6x63.5	78	94	2x1.5	
101.6-76.2	101.6x76.2	60	74	2x1.65	

Dimensions - Concentric Reducers (Long)



Size	AxB	L1	T	
25-19	25x19	85	1.25x1.25	1.5x1.5
38-19	38x19	85	1.25x1.25	1.5x1.5
38-25	38x25	99	1.25x1.25	1.5x1.5
51-25	51x25	117	1.25x1.25	1.5x1.5
51-38	51x38	99	1.25x1.25	1.5x1.5
63.5-25	63.5x25	134	1.65x1.65	2x2
63.5-38	63.5x38	117.5	1.65x1.65	2x2
63.5-51	63.5x51	99	1.65x1.65	2x2
76.1-25	76.1x25	152	1.65x1.65	2x2
76.1-38	76.1x38	134	1.65x1.65	2x2
76.1-51	76.1x51	117	1.65x1.65	2x2
76.1-63	76.1x63.5	99	1.65x1.65	2x2
102-51	102x51	155	2x1.25	
102-63	102x63.5	138	2x1.5	
102-76	102x76.1	120	2x1.65	

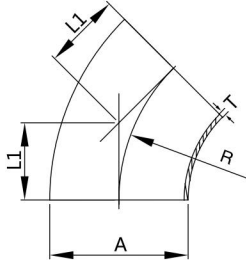
Dimensions - Eccentric Reducers (Long)



Size	AxB	L1	T	
38-25	38x25	106	1.25x1.25	1.5x1.5
51-25	51x25	128	1.25x1.25	1.5x1.5
51-38	51x38	107	1.25x1.25	1.5x1.5
63.5-25	63.5x25	150.5	1.65x1.65	2x2
63.5-38	63.5x38	130	1.65x1.65	2x2
63.5-51	63.5x51	104	1.65x1.65	2x2
76.1-38	76.1x38	149	1.65x1.65	2x2
76.1-51	76.1x51	128	1.65x1.65	2x2
76.1-63	76.1x63.5	107	1.65x1.65	2x2
101-51	101.6x51	177	2x2	
101-63	101.6x63.5	154	2x2	
101-76	101.6x76.1	134	2x2	
102-51	102x51	177	2x2	
102-63	102x63.5	154	2x2	
102-76	102x76.1	134	2x2	



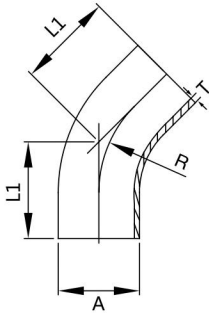
3A



Dimensions - 45° Welded Elbow

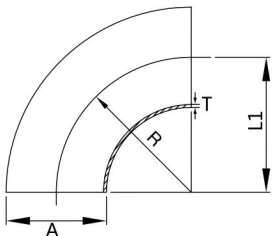
Size	A	R	L1	T
1/2"	12.7	19	7.1	1.65
3/4"	19	28.6	11.9	1.65
1"	25.4	38.1	15.8	1.65
1 1/4"	31.8	47.7	19.8	1.65
1 1/2"	38.1	57.2	23.8	1.65
2"	50.8	76.2	31.8	1.65
2 1/2"	63.5	95.3	39.6	1.65
3"	76.2	114.3	47.6	1.65
4"	101.6	152.4	63.5	2.1
6"	152.4	228.6	94.7	2.8
8"	203.2	305.2	126.4	2.8
10"	254	381	157.8	2.8
12"	304.8	457	189.3	2.8

Dimensions - 45° Long Welded Elbow



Size	A	R	L1	T
1/2"	12.7	19	57.2	1.65
3/4"	19.5	28.58	57.2	1.65
1"	25.4	38.1	30.2	1.65
1 1/4"	31.8	47.7	41.3	1.65
1 1/2"	38.1	57.2	41.3	1.65
2"	50.8	76.2	58.7	1.65
2 1/2"	63.5	95.3	76.2	1.65
3"	76.2	114.3	93.7	1.65
4"	101.6	152.4	122.2	1.65
6"	152.4	228.6	158.2	2.8

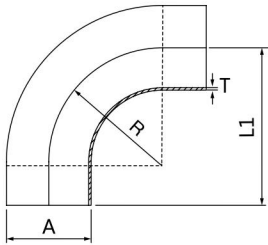
Dimensions - 45° Welded Elbow



Size	A	R	L1	T
1/2"	12.7	19.1	19.1	1.65
3/4"	19.1	28.6	28.6	1.65
1"	25.4	38.1	38.1	1.65
1 1/4"	31.8	47.7	47.7	1.65
1 1/2"	38.1	57.2	57.2	1.65
2"	50.8	76.2	76.2	1.65
2 1/2"	63.5	95.3	95.3	1.65
3"	76.2	114.3	114.3	1.65
4"	101.6	152.4	152.4	1.65
5"	127	190.5	190.5	2
6"	152.4	228.6	228.6	2.8
8"	203.2	304.8	304.8	2.8
10"	254	381	381	2.8
12"	304.8	457.2	457.2	2.8

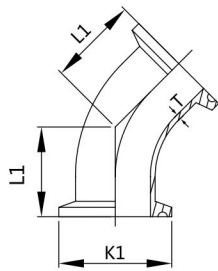


3A



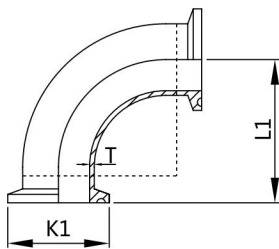
Dimensions - 90° Long Welded Elbow

Size	A	R	L1	T
1/2"	12.7	19.1	25.4	1.65
3/4"	19.1	28.6	38.1	1.65
1"	25.4	38.1	52.4	1.65
1 1/4"	31.8	47.7	69.7	1.65
1 1/2"	38.1	57.2	74.6	1.65
2"	50.8	76.2	103.2	1.65
2 1/2"	63.5	95.3	131.8	1.65
3"	76.2	114.3	160.3	1.65
4"	101.6	152.4	211.1	2
6"	152.4	228.6	292.1	2.8
8"	203.2	228.6	304.8	2.8



Dimensions - 45° Clamped Elbow

Size	L1	K1	T
1"	28.5	50.5	1.65
1 1/2"	36.5	50.5	1.65
2"	44.5	64	1.65
2 1/2"	52.3	77	1.65
3"	60.3	91	1.65
4"	76.2	119	2.1

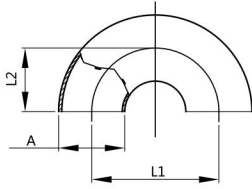


Dimensions - 90° Clamped Elbow

Size	L1	K1	T
1"	50.8	50.5	1.65
1 1/2"	69.9	50.5	1.65
2"	88.9	64	1.65
2 1/2"	108	77	1.65
3"	127	91	1.65
4"	168.2	119	2.1



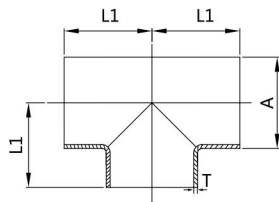
3A



Dimensions - 180° Welded Elbow

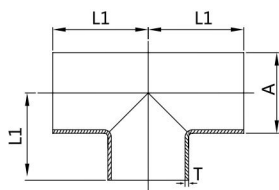
Size	A	L1	L2
1"	25.4	76.2	38.1
1 1/2"	38.1	114.3	57.2
2"	50.8	152.4	76.2
2 1/2"	63.5	190.5	95.3
3"	76.2	228.6	114.3
4"	101.6	304.8	152.4

Dimensions - Short Welded Tee



Size	A	L1	T
1/2"	12.7	19	1.65
3/4"	19	28.6	1.65
1"	25.4	28.6	1.65
1 1/4"	31.8	35	1.65
1 1/2"	38.1	42	1.65
2"	50.8	52.3	1.65
2 1/2"	63.5	59.5	1.65
3"	76.2	65.9	1.65
4"	101.6	87.3	2.11
6"	152.4	127	2.8
8"	203.2	178	2.8
10"	254	216	2.8

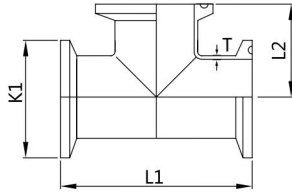
Dimensions - Long Welded Tee



Size	A	L1	T
1/2"	12.7	47.6	1.65
3/4"	19	47.6	1.65
1"	25.4	47.6	1.65
1 1/4"	31.8	55	1.65
1 1/2"	38.1	57.2	1.65
2"	50.8	76.2	1.65
2 1/2"	63.5	76.2	1.65
3"	76.2	82.6	1.65
4"	101.6	98.4	2.11
6"	152.4	143	2.8
8"	203.2	178	2.8
10"	254	216	2.8

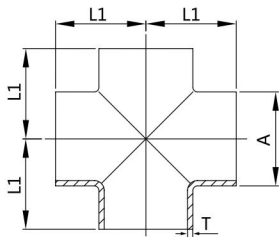


3A



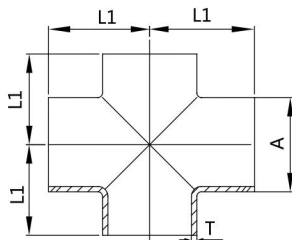
Dimensions - Clamped Tee

Size	L1	L2	K1	T
1"	120.6	60.3	50.5	1.65
1 1/2"	139.8	69.9	50.5	1.65
2"	177.8	88.9	64	1.65
2 1/2"	177.8	88.9	77	1.65
3"	190.6	95.3	91	1.65
4"	228.4	114.2	119	2.1



Dimensions - Short Welded Cross

Size	A	L1	L2
1"	25.4	28.6	1.65
1 1/4"	31.8	38	1.65
1 1/2"	38.1	42.1	1.65
2"	50.8	52.4	1.65
2 1/2"	63.5	54.5	1.65
3"	76.2	65.9	1.65
4"	101.6	87.3	2.11

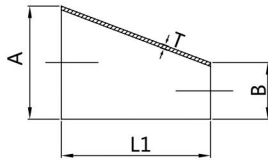
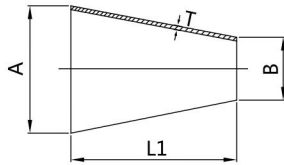


Dimensions - Long Welded Cross

Size	A	L1	T
1/2"	12.7	76.2	1.65
3/4"	19	47.6	1.65
1"	25.4	47.6	1.65
1 1/4"	31.8	55	1.65
1 1/2"	38.1	57.2	1.65
2"	50.8	76.2	1.65
2 1/2"	63.5	76.2	1.65
3"	76.2	82.6	1.65
4"	101.6	98.4	2.11
6"	152.4	127	2.77



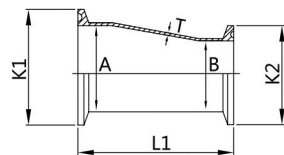
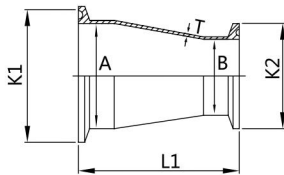
3A



Dimensions - Welded Reducer

Size	AxB	L1	T
1"-3/4"	25.4-19	25.4	1.65x1.65
1 1/2"-3/4"	38.1-19	76.2	1.65x1.65
1 1/2"-1"	38.1-25.4	50.8	1.65x1.65
2"-1"	50.8-25.4	101.6	1.65x1.65
2"-1 1/2"	50.8-38.1	50.8	1.65x1.65
2 1/2"-1"	63.5-25.4	152.4	1.65x1.65
2 1/2"-1 1/2"	63.5-38.1	101.6	1.65x1.65
2 1/2"-2"	63.5-50.8	50.8	1.65x1.65
3"-1"	76.2-25.4	203.2	1.65x1.65
3"-1 1/2"	76.2-38.1	152.4	1.65x1.65
3"-2"	76.2-50.8	101.6	1.65x1.65
3"-2 1/2"	76.2-63.5	50.8	1.65x1.65
4"-1 1/2"	101.6-38.1	25.4	2.11x1.65
4"-2"	101.6-50.8	203.2	2.11x1.65
4"-2 1/2"	101.6-63.5	152.4	2.11x1.65
4"-3"	101.6x76.2	101.6	2.11x1.65
6"-3"	152.4-76.2	140	2.77x1.65
6"-4"	152.4-101.6	140	2.77x2.11

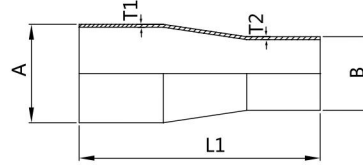
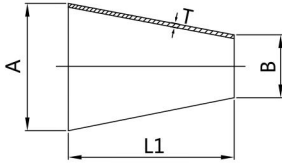
Dimensions - Clamped Reducer



Size	AxB	K1xK2	L1	T
3/4"-1/2"	19x12.7	25.2x25.2	50.8	1.65x1.65
1"-1/2"	25.4x12.7	50.5x25.2	76.2	1.65x1.65
1"-3/4"	25.4x19	50.5x25.2	50.8	1.65x1.65
1 1/2"-3/4"	38.1x19	50.5x25.2	101.6	1.65x1.65
1 1/2"-1"	38.1x25.4	50.5x50.5	76.2	1.65x1.65
1 1/2"-1/2"	38.1x12.7	50.5x25.2	127	1.65x1.65
2"-1/2"	51x12.7	64x25.2	177.8	1.65x1.65
2"-3/4"	51x19	64x25.2	152.4	1.65x1.65
2"-1"	50.8x25.4	64x50.5	127	1.65x1.65
2"-1 1/2"	50.8x38.1	64x50.5	76.2	1.65x1.65
2-1/2"-1 1/2"	63.5x38.1	77.5x50.5	127	1.65x1.65
2 1/2"-2"	63.5x50.8	77.5x64	76.2	1.65x1.65
3"-1"	76.2x25.4	91x50.5	228.6	1.65x1.65
3"-1 1/2"	76.2x38.1	91x50.5	177.8	1.65x1.65
3"-2"	76.2x50.8	91x64	127	1.65x1.65
3"-2 1/2"	76.2x63.5	91x77.5	76.2	1.65x1.65
4"-1/2"	101.6x38.1	119x50.5	282.5	2x1.65
4"-2"	101.6x50.8	119x64	231.8	2x1.65
4"-2 1/2"	101.6x63.5	119x77.5	181	2x1.65
4"-3"	101.6x76.2	119x91	130.2	2x1.65
6"-3"	152.4x76.2	167x91	263.5	2.8x1.65
6"-4"	152.4x101.6	167x119	266.7	2.8x2.1



3A



Dimensions - Concentric Reducer

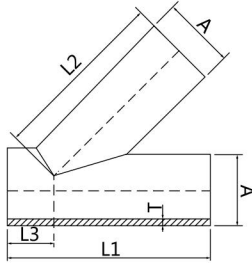
Size	AxB	L1	T
1/2"x1/4"	12.7x6.35	25.4	1.65
1/2"x3/8"	12.7x9.53	25.4	1.65
3/4"x1/2"	19.1x12.7	25.4	1.65
3/4"x3/8"	19.1x9.53	25.4	1.65
1"x1/2"	25.4x12.7	38.1	1.65
1"x3/8"	25.4x9.53	38.1	1.65
1"x3/4"	25.4x19.1	25.4	1.65
1 1/2"x1/2"	38.1x12.7	63.5	1.65
1 1/2"x3/4"	38.1x19.1	50.8	1.65
1 1/2"x1"	38.1x25.4	50.8	1.65
2"x1/2"	50.8x12.7	114.3	1.65
2"x3/4"	50.8x19.1	101.6	1.65
2"x1"	50.8x25.4	101.6	1.65
2"x1 1/2"	50.8x38.1	50.8	1.65
2 1/2"x1"	63.5x25.4	152.4	1.65
2 1/2"x1 1/2"	63.5x38.1	101.6	1.65
2 1/2"x2"	63.5x50.8	50.8	1.65
3"x1"	76.2x25.4	203.2	1.65
3"x1 1/2"	76.2x38.1	152.4	1.65
3"x2"	76.2x50.8	101.6	1.65
3"x2 1/2"	76.2x63.2	50.8	1.65
4"x1"	101.6x25.4	34.8	2.1
4"x1 1/2"	101.6x38.1	254	2.1
4"x2"	101.6x50.8	203.2	2.1
4"x2 1/2"	101.6x63.2	152.4	2.1
4"x3"	101.6x76.2	101.6	2.1
5"x4"	127x101.6	70	2.77
6"x3"	152.4x76.2	241.3	2.77
6"x4"	152.4x101.6	139.7	2.77

Dimensions - Long Concentric Reducer

Size	AxB	L1	T
1/2"x1/4"	12.7x6.35	101.6	1.65
1/2"x3/8"	12.7x9.53	101.6	1.65
3/4"x3/8"	19.1x9.53	101.6	1.65
3/4"x1/2"	19.1x12.7	101.6	1.65
1"x1/2"	25.4x12.7	114.3	1.65
1"x3/8"	25.4x9.53	114.3	1.65
1"x3/4"	25.4x19.1	101.6	1.65
1 1/2"x1/2"	38.1x12.7	139.7	1.65
1 1/2"x3/4"	38.1x19.1	127	1.65
1 1/2"x1"	38.1x25.4	127	1.65
2"x1/2"	50.8x12.7	196.9	1.65
2"x3/4"	50.8x19.1	184.2	1.65
2"x1"	50.8x25.4	184.2	1.65
2"x1 1/2"	50.8x38.1	133.4	1.65
2 1/2"x1/2"	63.5x12.7	247.7	1.65
2 1/2"x3/4"	63.5x19.1	235	1.65
2 1/2"x1"	63.5x25.4	235	1.65
2-1/2"x1 1/2"	63.5x38.1	184.2	1.65
2 1/2"x2"	63.5x50.8	139.7	1.65
3"x1/2"	76.2x12.7	298.5	1.65
3"x1"	76.2x25.4	285.8	1.65
3"x1 1/2"	76.2x38.1	235	1.65
3"x2"	76.2x50.8	190.5	1.65
3"x2 1/2"	76.2x63.5	139.7	1.65
4"x1"	101.6x25.4	393.7	2.1
4"x1 1/2"	101.6x38.1	342.9	2.1
4"x2"	101.6x50.8	298.5	2.1
4"x2 1/2"	101.6x63.5	247.7	2.1
4"x3"	101.6x76.2	196.9	2.1
6"x4"	152.4x101.6	254	2.77



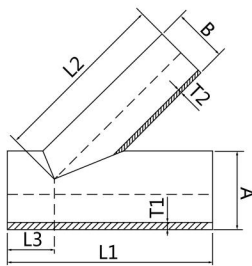
3A



Dimensions - Butt Weld Y-Type Tee

Size	A	L1	L2	L3	T
1/2"	12.7	152.4	127	25.4	1.65
3/4"	19.05	152.4	127	25.4	1.65
1"	25.4	152.4	127	25.4	1.65
1 1/2"	38.1	187.3	173.1	30.2	1.65
2"	50.8	222.2	180.9	41.3	1.65
2 1/2"	63.5	254	215.9	38.1	1.65
3"	76.2	273.1	225.4	47.6	1.65
4"	101.6	325.5	273.1	52.4	2.1
6"	152.4	419.1	317.5	101.6	2.8

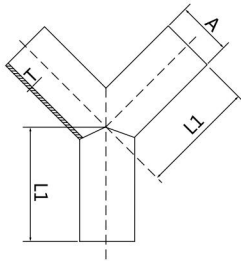
Dimensions - Butt Y-Type Reducer Tee



Size	AxB	L1	L2	L3	T1xT2
1 1/2"-1"	38.1x25.4	187.3	157.2	30.2	1.65x1.65
2"-1"	50.8x25.4	222.2	181	41.3	1.65x1.65
2"-1 1/2"	50.8x38.1	222.2	181	41.3	1.65x1.65
2 1/2"-1"	63.5x25.4	254	215.9	38.1	1.65x1.65
2 1/2"-1 1/2"	63.5x38.1	254	215.9	38.1	1.65x1.65
2 1/2"-2"	63.5x50.8	254	215.9	38.1	1.65x1.65
3"-1"	76.2x25.4	273.1	225.4	47.6	1.65x1.65
3"-1 1/2"	76.2x38.1	273.1	225.4	47.6	1.65x1.65
3"-2"	76.2x50.8	273.1	225.4	47.6	1.65x1.65
3"-2 1/2"	76.2x63.5	273.1	225.4	47.6	1.65x1.65
4"-1"	101.6x25.4	325.5	273.1	52.4	2.1x1.65
4"-1 1/2"	101.6x38.1	325.5	273.1	52.4	2.1x1.65
4"-2"	101.6x50.8	274.7	273.1	52.4	2.1x1.65
4"-2 1/2"	101.6x63.5	325.5	273.1	52.4	2.1x1.65
4"-3"	101.6x76.2	325.5	273.1	52.4	2.1x1.65

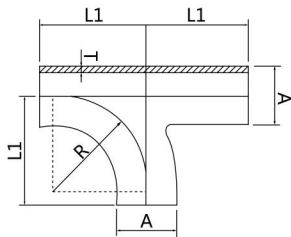


3A



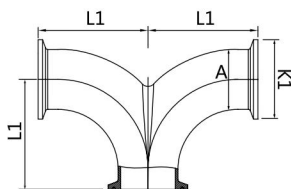
Dimensions - Butt Weld Y-Type Tee

Size	A	L1	T
1/2"	12.7	50.8	1.65
3/4"	19.05	50.8	1.65
1"	25.4	76.2	1.65
1 1/2"	38.1	76.2	1.65
2"	50.8	101.6	1.65
2 1/2"	63.5	127	1.65
3"	76.2	152.4	1.65
4"	101.6	203.2	2.1
6"	152.4	203.2	2.8



Dimensions - Butt Weld R-Type Tee

Size	A	R	L1	T
1/2"	25.4	38.1	65	1.65
1 1/2"	38.1	57.2	85	1.65
2"	50.8	76.2	110	1.65
2 1/2"	63.5	95.3	135	1.65
3"	76.2	114.3	155	1.65
4"	101.6	152.4	195	2.1

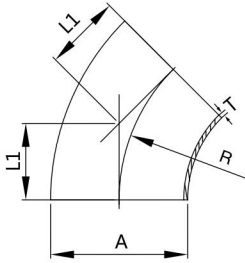


Dimensions - 90° Clamp Double Elbow

Size	A	K1	L1
1"	25.4	50.5	50.8
1 1/4"	31.75	50.5	69.85
1 1/2"	38.1	50.5	60.4
2"	50.8	64	88.9
2 1/2"	63.5	77.5	107.9
3"	76.2	91	127
4"	101.6	119	168.4



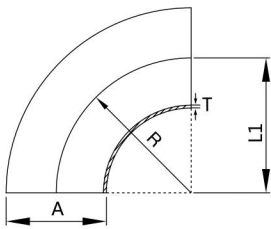
ISO / IDF



Dimensions - 45° Welded Elbow

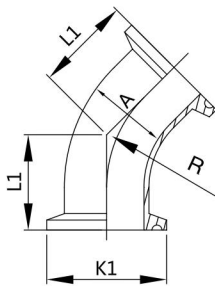
Size	A	R	L1	T
1"	25.4	33.5	13.9	1.2/1.5
1 1/4"	32	38	15.7	1.2/1.5
1 1/2"	38.1	48.5	20.1	1.2/1.5
2"	50.8	60.5	25.1	1.2/1.5
2 1/2"	63.5	83.5	34.6	2
3"	76.2	88.5	36.7	2
3 1/2"	89	103.5	42.9	2
4"	101.6	127	52.1	2

Dimensions - 90° Welded Elbow



Size	A	R	L1	T
1"	25.4	33.5	33.5	1.2/1.5
1 1/4"	32	38	38	1.2/1.5
1 1/2"	38.1	48.5	48.5	1.2/1.5
2"	50.8	60.5	60.5	1.2/1.5
2 1/2"	63.5	83.5	83.5	2
3"	76.2	88.5	88.5	2
3 1/2"	89	103.5	103.5	2
4"	101.6	127	127	2
4 1/2"	114.3	152.4	152.4	2
5"	127	190.5	190.5	2.77
6"	152.4	228.6	228.6	2.77

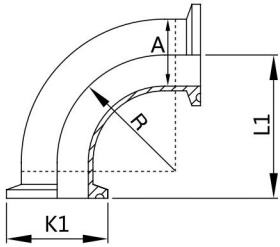
Dimensions - 45° Clamped



Size	A	R	L1	T
1"	25.4	33.5	35.4	50.5
1 1/4"	31.8	38	37.2	50.5
1 1/2"	38.1	48.5	41.6	50.5
2"	50.8	60.5	46.6	64
2 1/2"	63.5	83.5	56.1	77.5
3"	76.2	88.5	58.2	91
3 1/2"	89	103.5	64.4	106
4"	101.6	127	72.3	119



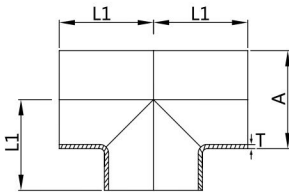
ISO / IDF



Dimensions - 90° Clamped Elbow

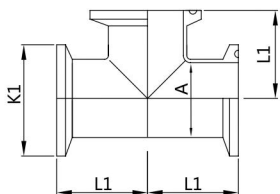
Size	A	R	L1	K1
1"	25.4	33.5	55	50.5
1 1/4"	31.8	38	59.5	50.5
1 1/2"	38.1	48.5	70	50.5
2"	50.8	60.5	82	64
2 1/2"	63.5	83.5	105	77.5
3"	76.2	88.5	110	91
3 1/2"	89	103.5	125	106
4"	101.6	127	148.5	119

Dimensions - Welded Tee



Size	A	L1	T
1"	25.4	33.5	1.2/1.5
1 1/4"	31.8	38.1	1.2/1.5
1 1/2"	38.1	48.5	1.2/1.5
2"	50.8	60.5	1.2/1.5
2 1/2"	63.5	83.5	2
3"	76.2	88.5	2
3 1/2"	88.9	103.5	2
4"	101.6	127	2

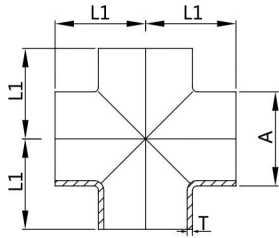
Dimensions - Clamped Tee



Size	A	L1	K1
1"	25.4	55	50.5
1 1/4"	31.8	59.5	50.5
1 1/2"	38.1	70	50.5
2"	50.8	82	64
2 1/2"	63.5	104.5	77.5
3"	76.2	109.5	91
3 1/2"	89	124.5	106
4"	101.6	148.5	119



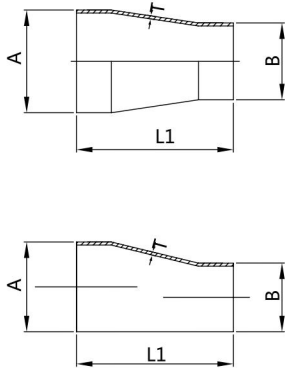
ISO / IDF



Dimensions - Welded Cross

Size	A	L1	T
1"	25.4	33.5	1.2/1.5
1 1/4"	32	38	1.2/1.5
1 1/2"	38	48.5	1.2/1.5
2"	51	60.5	1.2/1.5
2 1/2"	63.5	83.5	2
3"	76.2	88.5	2
3 1/2"	89	103.5	2
4"	101.6	127	2

Dimensions - Welded Reducer

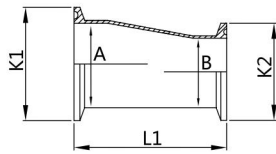
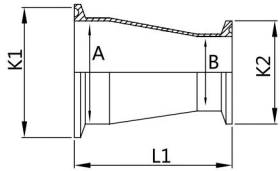


Size	AxB	L1	T
1"-3/4"	25.4x19	38	1.2/1.5x1.2/1.5
1 1/4"-1"	31.8x25.4	50	1.2/1.5x1.2/1.5
1 1/2"-1"	38.1x25.4	50	1.2/1.5x1.2/1.5
1 1/2"-1 1/4"	38.1x31.8	50	1.2/1.5x1.2/1.5
2"-1"	50.8x25.4	67	1.2/1.5x1.2/1.5
2"-1 1/4"	50.8x31.8	67	1.2/1.5x1.2/1.5
2"-1 1/2"	50.8x38.1	67	1.2/1.5x1.2/1.5
2 1/2"-1"	63.5x25.4	67	2x1.2/1.5
2 1/2"-1 1/2"	63.5x38.1	67	2x1.2/1.5
2 1/2"-2"	63.5x50.8	67	2x1.2/1.5
3"-1 1/2"	76.2x38.1	67	2x1.2/1.5
3"-2"	76.2x50.8	67	2x1.2/1.5
3"-2 1/2"	76.2x63.5	67	2x2
3 1/2"-2"	88.9x50.8	67	2x1.2/1.5
3 1/2"-2 1/2"	88.9x63.5	67	2x2
3 1/2"-3"	88.9x76.2	67	2x2
4"-2"	101.6x50.8	102	2x1.2/1.5
4"-2 1/2"	101.6x63.5	102	2x2
4"-3"	101.6x76.2	102	2x2
4"-3 1/2"	101.6x88.9	102	2x2



ISO / IDF

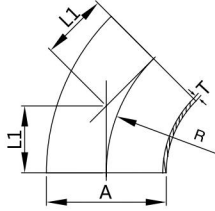
Dimensions - Clamped Reducer



Size	AxB	K1xK2	L1
1"-3/4"	25.4x19	50.5x34	80
1 1/4"-1"	31.8x25.4	50.5x50.5	92
1 1/2"-1 1/4"	38.1x31.8	50.5x50.5	92
1 1/2"-1"	38.1x25.4	50.5x50.5	92
2"-1 1/2"	50.8x38.1	64x50.5	109
2"-1 1/4"	50.8x31.8	64x50.5	109
2"-1"	50.8x25.4	64x50.5	109
2 1/2"-2"	63.5x50.8	77.5x64	109
2 1/2"-1 1/2"	63.5x38.1	77.5x50.5	109
2 1/2"-1"	63.5x25.4	77.5x50.5	109
3"-2 1/2"	76.2x63.5	91x77.5	109
3"-2"	76.2x50.8	91x64	109
3"-1 1/2"	76.2x38.1	91x50.5	109
3 1/2"-3"	89x76.2	106x91	109
3 1/2"-2 1/2"	89x63.5	106x77.5	109
3 1/2"-2"	89x50.8	106x64	109
4"-3 1/2"	101.6x89	119x106	145
4"-3"	101.6x76.2	119x91	145
4"-2 1/2"	101.6x63.5	119x77.5	145
4"-2"	101.6x50.8	119x64	145

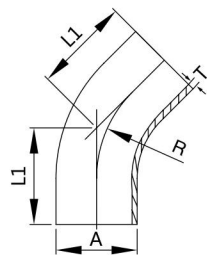


BS4825



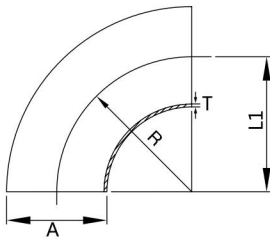
Dimensions - 45° Short Welded Elbow

Size	A	R	L1	T
1"	25.4	38.1	15.8	1.65
1 1/2"	38.1	57.2	23.7	1.65
2"	50.8	76.2	31.8	1.65
2 1/2"	63.5	95.3	39.6	1.65
3"	76.2	114.3	47.5	1.65
4"	101.6	152.4	63.2	2.11



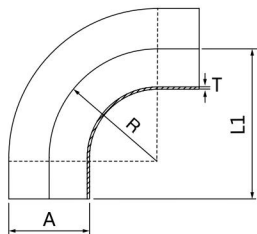
Dimensions - 45° Long Welded Elbow

Size	A	R	L1	T
1"	25.4	38.1	30.2	1.65
1 1/2"	38.1	57.2	41.3	1.65
2"	50.8	76.2	58.7	1.65
2 1/2"	63.5	95.3	76.2	1.65
3"	76.2	114.3	93.7	1.65
4"	101.6	152.4	122.2	2.11



Dimensions - 90° Welded Elbow

Size	A	R	L1	T
1"	25.4	38.1	43.5	1.65
1 1/4"	31.8	47.7	53.5	1.65
1 1/2"	38.1	57.2	63.5	1.65
2"	50.8	76.2	88.5	1.65
2 1/2"	63.5	95.3	113.5	1.65
3"	76.2	114.3	133.5	1.65
4"	101.6	152.4	173.5	2.11

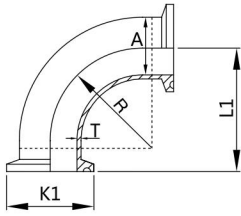


Dimensions - 90° Welded Elbow

Size	A	R	L1	T
1/2"	12.7	19	45	1.65
3/4"	19	28.58	60	1.65
1"	25.4	38.1	65	1.65
1 1/4"	31.8	47.1	75	1.65
1 1/2"	38.1	57.2	85	1.65
2"	50.8	76.2	110	1.65
2 1/2"	63.5	95.3	135	1.65
3"	76.2	114.3	155	1.65
4"	101.6	152.4	195	2.11



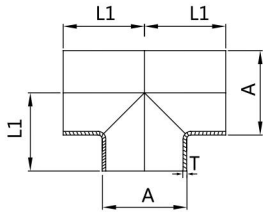
BS4825



Dimensions - 90° Clamped Elbow

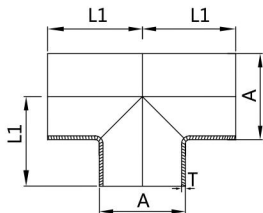
Size	A	R	L1	K1	T
1"	25.4	38.1	65	50.5	1.65
1 1/2"	38.1	57.2	85	50.5	1.65
2"	50.8	76.2	110	64	1.65
2 1/2"	63.5	95.3	135	77.5	1.65
3"	76.2	114.3	155	91	1.65
4"	101.6	152.4	195	119	2.11

Dimensions - Short Welded Tee



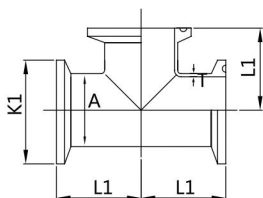
Size	A	L1	T
1"	25.4	43.5	1.65
1 1/4"	31.8	53.5	1.65
1 1/2"	38.1	63.5	1.65
2"	50.8	88.5	1.65
2 1/2"	63.5	113.5	1.65
3"	76.2	133.5	1.65
4"	101.6	173.5	2.11

Dimensions - Long Welded Tee



Size	A	L1	T
1"	25.4	65	1.65
1 1/2"	38.1	85	1.65
2"	50.8	110	1.65
2 1/2"	63.5	135	1.65
3"	76.2	155	1.65
4"	101.6	195	2.11

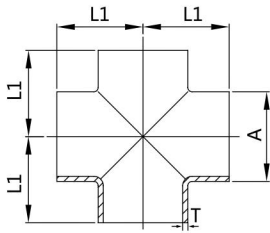
Dimensions - Clamped Tee



Size	A	L1	K1	T
1/2"	12.7	57.2	25.4	1.65
3/4"	19	60.3	25.4	1.65
1"	25.4	66.7	50.5	1.65
1 1/2"	38.1	73	50.5	1.65
2"	50.8	85.7	64	1.65
2 1/2"	63.5	92.1	77.5	1.65
3"	76.2	98.4	91	1.65
4"	101.6	120.7	119	2.11



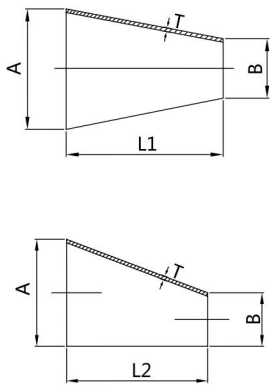
BS4825



Dimensions - Welded Cross

Size	A	L1	T
1"	25.4	65	1.65
1 1/2"	38.1	85	1.65
2"	50.8	110	1.65
2 1/2"	63.5	135	1.65
3"	76.2	155	1.65
4"	101.6	195	2.11

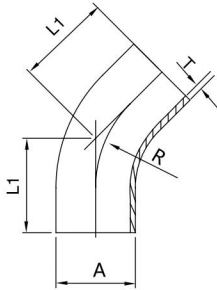
Dimensions - Concentric / Eccentric Reducer



Size	AxB	L1	L2	T
1 1/2"-1"	38.1x25.4	29	35	1.65
2"-1"	50.8x25.4	53	54	1.65
2"-1 1/2"	50.8x38.1	41	36	1.65
2 1/2"-1"	63.5x25.4	82	76	1.65
2 1/2"-1 1/2"	63.5x38.1	64	66	1.65
2 1/2"-2"	63.5x50.8	40	35	1.65
3"-1"	76.2x25.4	110	112	1.65
3"-1 1/2"	76.2x38.1	81	38.1	1.65
3"-2"	76.2x50.8	55	50.8	1.65
3"-2 1/2"	76.2x63.5	41	63.5	1.65
4"-1 1/2"	101.6x38.1	135	38.1	2
4"-2"	101.6x50.8	106	50.8	2
4"-2 1/2"	101.6x63.5	76	63.5	2
4"-3"	101.6x76.2	53	76.2	2



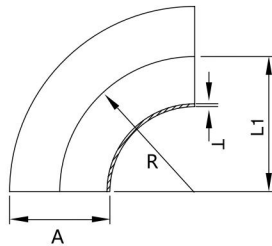
AS



Dimensions - 45° Long Welded Elbow

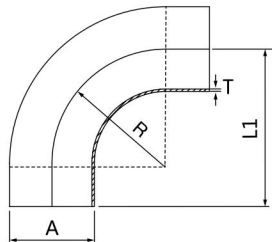
Size	A	R	L1	T
1/2"	12.7	19.05	37.9	1.6
3/4"	19.1	28.6	41.8	1.6
1"	25.4	38.1	45.8	1.6
1 1/4"	31.8	47.7	49.7	1.6
1 1/2"	38.1	57.2	53.7	1.6
2"	50.8	76.2	61.6	1.6
2 1/2"	63.5	95.3	69.5	1.6
3"	76.2	114.3	77.3	1.6
4"	101.6	152.4	92.8	2

Dimensions - 90° Welded Elbow



Size	A	R	L1	T
1/2"	12.7	19.05	19.1	1.6
3/4"	19.1	28.6	28.6	1.6
1"	25.4	38.1	38.1	1.6
1 1/4"	31.8	47.7	47.7	1.6
1 1/2"	38.1	57.2	57	1.6
2"	50.8	76.2	76.2	1.6
2 1/2"	63.5	95	95	1.6
3"	76.2	114.3	114.2	1.6
4"	101.6	152.4	152.4	2

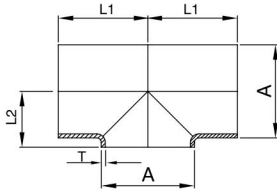
Dimensions - 90° Long Welded Elbow



Size	A	R	L1	T
1/2"	12.7	19.05	49.1	1.6
3/4"	19.1	28.6	58.6	1.6
1"	25.4	38.1	68.1	1.6
1 1/4"	31.8	47.7	77.7	1.6
1 1/2"	38.1	57.2	87	1.6
2"	50.8	76.2	106.2	1.6
2 1/2"	63.5	95	125	1.6
3"	76.2	114.3	144.2	1.6
4"	101.6	152.4	182.4	2



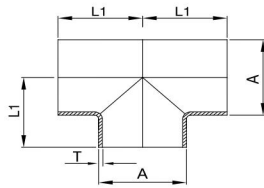
AS



Dimensions - Short Welded Tee

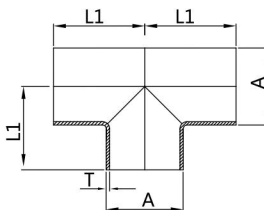
Size	A	L1	L2	T
1/2"	12.7	19.1	9.35	1.6
3/4"	19.1	28.6	12.55	1.6
1"	25.4	38.1	15.7	1.6
1 1/4"	31.8	47.7	18.9	1.6
1 1/2"	38.1	57	22.05	1.6
2"	50.8	76.2	28.4	1.6
2 1/2"	63.5	95	34.75	1.6
3"	76.2	114.2	41.1	1.6
4"	101.6	152.4	53.8	2

Dimensions - Welded Tee



Size	A	L1	T
1/2"	12.7	19.1	1.6
3/4"	19.1	28.6	1.6
1"	25.4	38.1	1.6
1 1/4"	31.8	47.7	1.6
1 1/2"	38.1	57	1.6
2"	50.8	76.2	1.6
2 1/2"	63.5	95	1.6
3"	76.2	114.2	1.6
4"	101.6	152.4	2

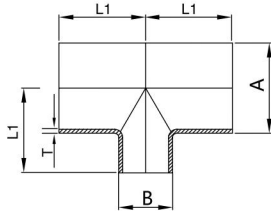
Dimensions - Long Welded Tee



Size	A	L1	T
1/2"	12.7	49.1	1.6
3/4"	19.1	58.6	1.6
1"	25.4	68.1	1.6
1 1/4"	31.8	77.7	1.6
1 1/2"	38.1	87	1.6
2"	50.8	106.2	1.6
2 1/2"	63.5	125	1.6
3"	76.2	144.2	1.6
4"	101.6	182.4	2



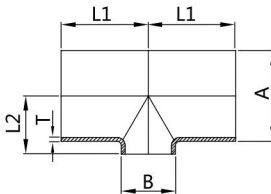
AS



Dimensions - Reducing Welded Tee

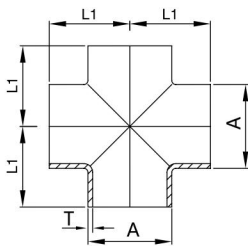
Size	AxB	L1	T
1 1/2"-1"	38.1x25.4	80	1.6
2"-1"	50.8x25.4	80	1.6
2"-1 1/2"	50.8x38.1	80	1.6
2 1/2"-1 1/2"	63.5x38.1	80	1.6
2 1/2"-2"	63.5x50.8	80	1.6
3"-1 1/2"	76.2x38.1	80	1.6
3"-2"	76.2x50.8	80	1.6
3"-2 1/2"	76.2x63.5	80	1.6
4"-2"	101.6x50.8	80	1.6
4"-2 1/2"	101.6x63.5	80	1.6
4"-3"	101.6x76.2	80	2

Dimensions - Short Reducing Welded Tee



Size	AxB	L1	L2	T
1 1/2"-1"	38.1x25.4	80	22.05	1.6
2"-1"	50.8x25.4	80	28.4	1.6
2"-1 1/2"	50.8x38.1	80	28.4	1.6
2 1/2"-1 1/2"	63.5x38.1	80	34.75	1.6
2 1/2"-2"	63.5x50.8	80	34.75	1.6
3"-1 1/2"	76.2x38.1	80	41.1	1.6
3"-2"	76.2x50.8	80	41.1	1.6
3"-2 1/2"	76.2x63.5	80	41.1	1.6
4"-2"	101.6x50.8	80	53.8	1.6
4"-2 1/2"	101.6x63.5	80	53.8	1.6
4"-3"	101.6x76.2	80	53.8	2

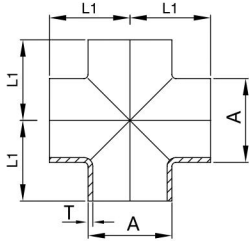
Dimensions - Welded Cross



Size	A	L1	T
1/2"	12.7	19.1	1.6
3/4"	19.1	28.6	1.6
1"	25.4	38.1	1.6
1 1/4"	31.8	47.7	1.6
1 1/2"	38.1	57	1.6
2"	50.8	76.2	1.6
2 1/2"	63.5	95	1.6
3"	76.2	114.2	1.6
4"	101.6	152.4	2



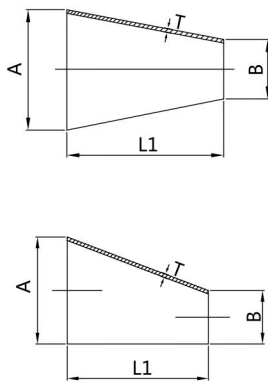
AS



Dimensions - Long Welded Cross

Size	A	L1	T
1/2"	12.7	49.1	1.6
3/4"	19.1	58.6	1.6
1"	25.4	68.1	1.6
1 1/4"	31.8	77.7	1.6
1 1/2"	38.1	87	1.6
2"	50.8	106.2	1.6
2 1/2"	63.5	125	1.6
3"	76.2	144.2	1.6
4"	101.6	182.4	2

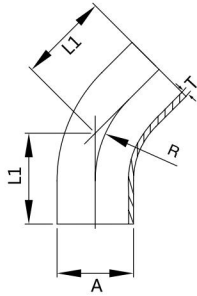
Dimensions - Welded Reducer



Size	AxB	L1	T
3/4"-1/2"	19.4x12.7	19.1	1.6
1"-1/2"	25.4x12.7	25.4	1.6
1"-3/4"	25.4x19.1	25.4	1.6
1 1/4"-3/4"	31.8x19.1	31.8	1.6
1 1/4"-1"	31.8x25.4	31.8	1.6
1 1/2"-3/4"	38.1x19.1	38.1	1.6
1 1/2"-1"	38.1x25.4	38.1	1.6
2"-1/2"	50.8x12.7	50.8	1.6
2"-3/4"	50.8x19.1	50.8	1.6
2"-1"	50.8x25.4	50.8	1.6
2"-1 1/4"	50.8x31.8	50.8	1.6
2"-1 1/2"	50.8x38.1	50.8	1.6
2 1/2"-1"	63.5x25.4	63.5	1.6
2 1/2"-1 1/4"	63.5x31.8	63.5	1.6
2 1/2"-1 1/2"	63.5x38.1	63.5	1.6
2 1/2"-2"	63.5x50.8	63.5	1.6
3"-1"	76.2x25.4	76.2	1.6
3"-1 1/4"	76.2x31.8	76.2	1.6
3"-1 1/2"	76.2x38.1	76.2	1.6
3"-2"	76.2x50.8	76.2	1.6
3"-2 1/2"	76.2x63.5	76.2	1.6
4"-1"	101.6x25.4	101.6	2
4"-1 1/4"	101.6x31.8	101.6	2
4"-1 1/2"	101.6x38.1	101.6	2
4"-2"	101.6x50.8	101.6	2
4"-2 1/2"	101.6x63.5	101.6	2
4"-3"	101.6x76.2	101.6	2



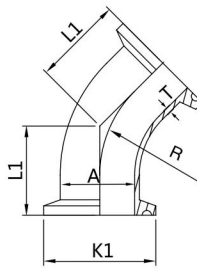
BPE



Dimensions - 45° Long Welded Elbow

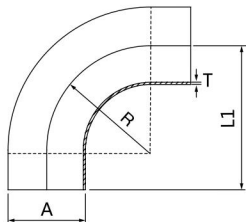
Size	A	R	L1	T
1/2"	12.7	19.1	57.2	1.65
3/4"	19.05	28.6	57.2	1.65
1"	25.4	38.1	57.2	1.65
1 1/2"	38.1	57.2	63.5	1.65
2"	50.8	76.2	76.2	1.65
2 1/2"	63.5	95.3	85.7	1.65
3"	76.2	114.3	92.1	1.65
4"	101.6	152.4	114.3	2.11
6"	152.4	288.6	158.8	2.77

Dimensions - 45° Clamped Elbow



Size	A	R	L1	K1	T
1/2"	12.7	19.1	25.4	25.4	1.65
3/4"	19	28.6	25.4	25.4	1.65
1"	25.4	38.1	28.6	50.5	1.65
1 1/2"	38.1	57.2	36.5	50.5	1.65
2"	50.8	76.2	44.5	64	1.65
2 1/2"	63.5	95.3	52.4	77.5	1.65
3"	76.2	114.3	60.3	91	1.65
4"	101.6	152.4	79.4	119	2.11
6"	152.4	288.6	133.4	166.8	2.77

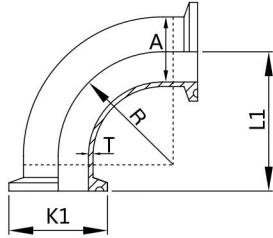
Dimensions - 90° Welded Elbow



Size	A	R	L1	T
1/2"	12.7	19.1	76.2	1.65
3/4"	19.05	28.6	76.2	1.65
1"	25.4	38.1	76.2	1.65
1 1/2"	38.1	57.2	95.3	1.65
2"	50.8	76.2	120.7	1.65
2 1/2"	63.5	95.3	139.7	1.65
3"	76.2	114.3	158.8	1.65
4"	101.6	152.4	203.2	2.11
6"	152.4	228.6	292	2.77



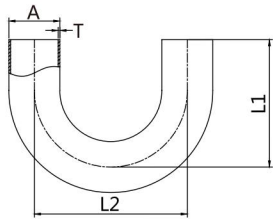
BPE



Dimensions - 90° Clamped Elbow

Size	A	R	L1	K1	T
1/2"	12.7	19	41.3	25.4	1.65
3/4"	19	28.6	41.3	25.4	1.65
1"	25.4	38.1	50.8	50.5	1.65
1 1/2"	38.1	57.2	69.9	50.5	1.65
2"	50.8	76.2	88.9	64	1.65
2 1/2"	63.5	95.3	108	77.5	1.65
3"	76.2	114.3	127	91	1.65
4"	101.6	152.4	168.3	119	2.11
6"	152.4	228.6	266.7	166.8	2.77

Dimensions - 180° Welded Elbow

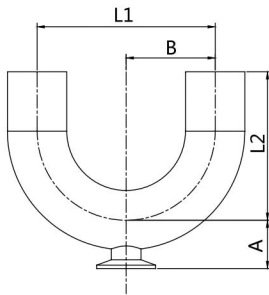


Size	A	L1	L2	T
1/2"	12.7	88.9	38.1	1.65
3/4"	19.05	88.9	57.2	1.65
1"	25.4	88.9	76.2	1.65
1 1/2"	38.1	127	114.3	1.65
2"	50.8	127	152.4	1.65
2 1/2"	63.5	146.1	190.5	1.65
3"	76.2	165.1	228.6	1.65
4"	101.6	215.9	304.8	2.1



BPE

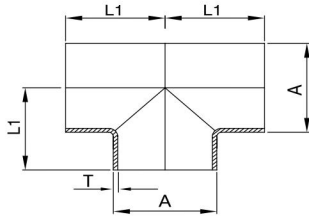
Dimensions - 180° Welded / Clamped Elbow



Size	A	B	L1	L2
3/4"x1/2"	25.4	57.15	57.2	95.25
1"x1/2"	25.58	57.15	76.2	95.25
1"x3/4"	25.58	57.15	76.2	95.25
1 1/2"x1/2"	34.93	76.2	114.3	114.3
1 1/2"x3/4"	34.93	76.2	114.3	114.3
1 1/2"x1"	34.93	76.2	114.3	114.3
2"x1/2"	41.28	76.2	152.4	127
2"x3/4"	41.28	76.2	152.4	127
2"x1"	41.28	76.2	152.4	127
2"x1 1/2"	41.28	76.2	152.4	127
2 1/2"x1/2"	47.63	95.25	190.5	146.05
2 1/2"x3/4"	47.63	95.25	190.5	146.05
2 1/2"x1"	47.63	95.25	190.5	146.05
2 1/2"x1 1/2"	47.63	95.25	190.5	146.05
2 1/2"x2"	47.63	95.25	190.5	146.05
3"x1/2"	53.98	114.3	228.6	165.1
3"x3/4"	53.98	114.3	228.6	165.1
3"x1"	53.98	114.3	228.6	165.1
3"x1 1/2"	53.98	114.3	228.6	165.1
3"x2"	53.95	114.3	228.6	165.1
3"x2 1/2"	53.95	114.3	228.6	165.1
4"x1/2"	66.68	152.4	304.8	215.9
4"x3/4"	66.68	152.4	304.8	215.9
4"x1"	66.68	152.4	304.8	215.9
4"x1 1/2"	66.68	152.4	304.8	215.9
4"x2"	66.68	152.4	304.8	215.9
4"x2 1/2"	66.68	152.4	304.8	215.9
4"x3"	66.68	152.4	304.8	215.9



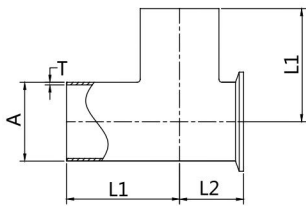
BPE



Dimensions - Welded Tee

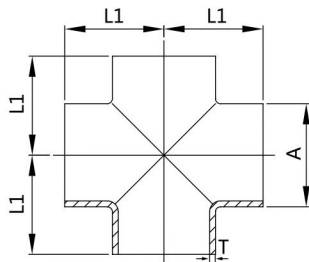
Size	A	L1	T
1/2"	12.7	47.6	1.65
3/4"	19.05	50.8	1.65
1"	25.4	54	1.65
1 1/2"	38.1	60.3	1.65
2"	50.8	73	1.65
2 1/2"	63.5	79.4	1.65
3"	76.2	85.7	1.65
4"	101.6	104.8	2.1

Dimensions - Short Outlet Run Tee (Weld / Weld / Clamp)



Size	A	L1	L2	T
1/2"	12.7	47.6	22.2	1.65
3/4"	19.05	50.8	19.05	1.65
1"	25.4	54	25.4	1.65
1 1/2"	38.1	60.3	38.1	1.65
2"	50.8	73	50.8	1.65
2 1/2"	63.5	79.4	63.5	1.65
3"	76.2	85.7	76.2	1.65
4"	101.6	104.8	101.6	2.1

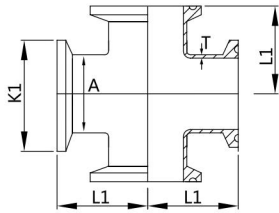
Dimensions - Welded Cross



Size	A	L1	T
1/2"	12.7	47.6	1.65
3/4"	19.05	50.8	1.65
1"	25.4	54	1.65
1 1/2"	38.1	60.3	1.65
2"	50.8	73	1.65
2 1/2"	63.5	79.4	1.65
3"	76.2	85.7	1.65
4"	101.6	104.8	2.11
6"	152.4	142.9	2.77



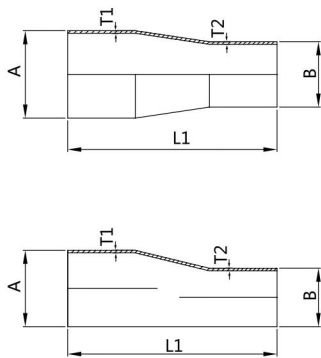
BPE



Dimensions - Clamped Cross

Size	A	L1	K1	T
1/2"	12.7	57.2	25.4	1.65
3/4"	19	60.3	25.4	1.65
1"	25.4	66.7	50.5	1.65
1 1/2"	38.1	73	50.5	1.65
2"	50.8	85.7	64	1.65
2 1/2"	63.5	92.1	77.5	1.65
3"	76.2	98.4	91	1.65
4"	101.6	120.7	119	2.11
6"	152.4	181	166.8	2.77

Dimensions - Welded Concentric Reducer



Size	AxB	L1	T1xT2
3/4"-1/2"	19.05x12.7	101.6	1.65x1.65
1"-1/2"	25.4x12.7	114.3	1.65x1.65
1"-3/4"	25.4x19.05	114.3	1.65x1.65
1 1/2"-1/2"	38.1x12.7	139.7	1.65x1.65
1 1/2"-3/4"	38.1x19.05	127	1.65x1.65
1 1/2"-1"	38.1x25.4	127	1.65x1.65
2"-1/2"	50.8x12.7	196.9	1.65x1.65
2"-3/4"	50.8x19.05	184.2	1.65x1.65
2"-1"	50.8x25.4	184.2	1.65x1.65
2"-1 1/2"	50.8x38.1	133.4	1.65x1.65
2 1/2"-1/2"	63.5x12.7	247.7	1.65x1.65
2 1/2"-3/4"	63.5x19.05	235	1.65x1.65
2 1/2"-1"	63.5x25.4	235	1.65x1.65
2 1/2"-1 1/2"	63.5x38.1	184.2	1.65x1.65
2 1/2"-2"	63.5x50.8	139.7	1.65x1.65
3"-1"	76.2x25.4	285.8	1.65x1.65
3"-1 1/2"	76.2x38.1	235	1.65x1.65
3"-2"	76.2x50.8	190.5	1.65x1.65
3"-2 1/2"	76.2x63.5	139.7	1.65x1.65
4"-1"	76.2x25.4	393.7	1.65x1.65
4"-1 1/2"	76.2x38.1	342.9	1.65x1.65
4"-2"	101.6x50.8	298.5	2.11x1.65
4"-2 1/2"	101.6x63.5	247.7	2.11x1.65
4"-3"	101.6x76.2	196.9	2.11x1.65
6"-4"	152.4x101.6	254	2.8x2.11





A PART OF
— USA —
CLINTON
— TEXON —
CLINTON TEXON GROUP, USA

Clinton Texon Group LLC
108 West 13th Street Wilmington, DW 19801
United States
www.vocester-usa.com



WISCO ALLIANCES CO., LTD.
9 Soi Sakaengam 17, Samaedum, Bangkhuntian, Bangkok 10150
Tel. : 02-840-0222 (Auto 50 Lines) Fax : 02-840-0036-7
www.wiscogroup.com

